



# MICHIGAN STATE UNIVERSITY



## CONSTRUCTION MANAGEMENT @ MSU



@MSUConstructionMgt  
@msupwb  
@msuspc



Michigan State University  
Construction Management  
(Alumni Group)



@michiganstatecm  
@msupwb  
@msu\_sbca

*Keep up with us!*

### Inside Edition:

Letter from the Director.....	2	2022 Career Fair Recap.....	13
Executive Committee.....	3	Student Groups.....	16
Alumni in the News.....	6	Department News.....	17
2022 Golf Outing Recap.....	8	Stay Connected.....	20
2022 Homecoming Recap.....	11		
Letter from the Program.....	13		



**Update your Alumni Profile!**  
[alumni.msu.edu](http://alumni.msu.edu)

Updating your alumni profile allows us to have the best contact information for all future publications! You can change your email, address, and current employer.

## Message from the School Director



Photo of Dr. Li

It is my absolute pleasure to report that the celebration of our Construction Management (CM) Program's 75th anniversary is well underway. Please mark your calendar and plan to join the celebration, September 29th on campus. Details of the event are coming soon this summer. Many thanks are owed to several members of the CM Industry & Advisory Board (IAB) for their enthusiasm and energy. We expect many alumni and friends to attend, and I am truly excited for our celebration this fall. I want to use this opportunity to thank many of you who reached out to the school in February when our university faced unimaginable difficulties after the senseless mass shootings that killed three students and injured several others. Your warmth and support was immeasurable. Our MSU community was tested and tried but we continue to come together, stronger, and better.

Thanks to the funding support of the college and private donations that have helped increase our teaching capacity, our CM faculty felt confident admitting more students to the upper division and have recommended to me an increase of our admission number to 60. I am pleased to report that the program has recently admitted all 55 students who applied to the upper division at the end of the spring semester. The quality of our students was very impressive, and I am glad that we are able to accept them all.

With the COVID-19 pandemic behind us, the school has returned to the use of its 2020-24 Strategic Plan to guide its direction. We will resume our implementation of the five strategic directions: including 1) unified school identity, 2) teaching, learning and students, 3) funding models, 4) administration and resource management, and 5) research and interdisciplinary efforts.

We will monitor the progress of each strategic direction and adjust our tactics accordingly.

New leadership now guides the school's diversity, equity, and inclusion (DEI) committee: Deyanira Nevarez Martinez and Holly Madill. They will continue the efforts of former co-chairs, Noah Durst and Mary Beth Graebert, to implement the DEI strategic plan adopted last year.

Our CM program welcomed Armin Yeganeh whose expertise includes construction management, sustainable housing, and real estate development. He has made significant contributions to the program and school. Other personnel changes include Sinem Mollaoglu's new role as the college's Faculty Excellence Advocate and Dong Zhao's directorship of the Ph.D. program. With Sinem Mollaoglu taking on a new role, she will be stepping down as CM Program Director and a new director will be named soon.

One of my greatest joys as school director is seeing the success of our students and faculty. Our IAB has been instrumental for CM program's success. I am grateful for the board's support.

Lastly, I want to take this opportunity to announce that I have decided to pursue an incredible career opportunity as Dean of the College of Architecture, Planning and Public Affairs at the University of Arlington, effective August 1st. Thus, this is my last update as SPDC School Director. Please accept my sincere gratitude for all that you do for both the program and the school.

Go Green!

**Ming-Han Li**, Ph.D., PLA, PE, FASLA, FCELA  
**Professor** and **School Director**, School of  
 Planning, Design and Construction



Melanie Goerke, Mike Prochazka, and Ed Wygnal

## Message from the Board:

Greetings Alumni!

It is my distinct honor to present the 2023 Michigan State University Construction Management Alumni Newsletter. It is a privilege to acknowledge the remarkable efforts of the newsletter subcommittee, who dedicated themselves to rebranding and building upon the success of last year's edition—the first in nearly a decade. My heartfelt appreciation goes to committee members: Melanie Goerke, Amanda Allen, Justin Barnes, and James Kramek.

The Board has been making remarkable strides in our key focus areas and has exciting plans in store for the upcoming Fall Semester. These include forging partnerships with our esteemed faculty members, organizing a mentorship program for current students, and arranging insightful jobsite tours, among other responsibilities.

Our unwavering commitment lies in fostering strong relationships with faculty, staff, student leaders, and all stakeholders who share our aspirations. As we step into 2023, we are thrilled to launch the newest IAB strategic plan, which encompasses invigorated 3-year, 5-year, and 10-year goals and commitments. This plan aims to support and empower the next generation of CM Spartans. The Board remains engaged in Fund Development, Curriculum & Outreach, Strategy Planning, and the continuous growth of our DEI subcommittee, all of which contribute immensely to the program's success.

As we approach the end of 2023, we have an array of exciting activities planned, and we sincerely hope you can join us, along with your fellow alumni and students, at one of our upcoming events. Our **24th Annual Golf Outing** will be held at Forest Akers West on **Tuesday, August 1st**.

Additionally, on Saturday, September 23rd, we invite you to join us for our 8th Annual Construction Management Alumni Tailgate as the MSU Spartans take on the Maryland Terrapins for Homecoming. Last but not least, we are thrilled to celebrate our **75th Anniversary** with a grand event on Friday, **September 29th, 2023**.

This extraordinary milestone affair will include a captivating walk through 75 years of construction management history, a delightful three-course dinner, an open bar, an awards presentation, and an abundance of prizes. We sincerely hope you can be part of this special occasion.

We are constantly seeking new members for the board, and if you or your company are interested in actively contributing to the CM program, we encourage you to consider joining us as a board member.

For any opportunities or expressions of interest, please connect with us at [msucmboard@gmail.com](mailto:msucmboard@gmail.com).

# MESSAGE FROM THE BOARD

The Board remains dedicated to supporting special opportunities for the growth of the CM program. Comprised of a dynamic and effective group of alumni and industry professionals, our common goal is to ensure the MSU Construction Management Program continues to thrive. To date, alumni like you from across the country have generously donated over \$585,000 directly to Board activities. These funds have been instrumental in supporting the program and students, facilitating invaluable in-field experiences, offering support to student organizations and competition teams, and acquiring necessary materials and equipment for our CM Lab.

We warmly welcome any additional comments, constructive feedback, or critiques of the board and program. Your insights are invaluable, as they help us better represent the needs and aspirations of all our supporters and community members. By continuously listening, preparing, and responding accordingly, we strive to advance together. The Board owes its success to the unwavering support of dedicated alumni like you, and we eagerly look forward to your assistance in nurturing the next generation of construction management professionals.

Go Green!

**Ed Wygnal**, Class of 2003, Board Chairman

**Michael Prochazka**, Class of 2009, Board Vice Chairman, The Christman Company

**Melanie Goerke**, Class of 2017, Board Secretary & Treasurer, HITT Contracting

[msucmboard@gmail.com](mailto:msucmboard@gmail.com)



**WE BUILD WHAT  
MATTERS**

Buildings. Relationships.  
Careers. Trust. Certainty.  
Success.

**POWER**  
CONSTRUCTION

@power\_construct @in

MICHIGAN STATE UNIVERSITY  
CONSTRUCTION MANAGEMENT PROGRAM

---

INVITES YOU TO THE

75<sup>th</sup> Anniversary

Gala

FRIDAY, SEPT. 29, 2023 AT 6PM

KELLOGG HOTEL  
EAST LANSING, MICHIGAN

*COCKTAIL ATTIRE PREFERRED*



## PROMOTIONS:

We would like to extend our heartfelt congratulations to CM Alum Dennis Carignan on his recent promotion to President of Granger Construction. Dennis graduated from the CM program in 1999, and previously sat on the CMIAB for many years until 2014. Dennis also currently serves as the Vice Chair of the Board of Directors for AGC of Michigan. Congrats!

Granger Construction is a long-time supporter of the Michigan State University Construction Management Program. We thank them for their dedication to the next generation of CM Spartans.



Photo of Dennis Carignan

## CRAIN'S BUSINESS JOURNAL - CHICAGO 2022



Photo of Clarence Carson

Crain's Chicago has named MSU CM Alum Clarence Carson to their 2022 Notable Black Leaders and Executives list. Clarence has decades of experience in Operations & Facilities, Real Estate Development and Construction. Clarence is a proud dual graduate of MSU, having received his Bachelor of Science in CM in 2003 and his Master of Science in CM with a minor in Urban Planning & Facilities in 2004. Clarence was extremely active in Sigma Lambda Chi and continues to support the program through his work with the CMIAB.

## \$5 MILLION DONATED TO HENRY FORD & MSU PARTNERSHIP

MSU CM Alum Ron Boji (Class of 1993) and his wife Heather, have donated \$5 Million in support of Henry Ford Health and Michigan State University. A shared building will allow consolidation of Henry Ford Health and MSU research activities and provide critical space for recruitment. Architectural planning is underway with a hopeful completion date of 2025. Plans for the exact location of the building are still being finalized but it will be constructed on Henry Ford Health's Detroit campus footprint, south of W. Grand Blvd.

Ron and his wife have continually given back to the MSU CM program and the University at Large. Ron was named the MSU Construction Management Alumni of the Year in 2015.



Left to Right: Wright Lassiter, CEO of Henry Ford Health, Ron Boji, Heather Boji, Former MSU President Samuel Stanley, MD.



**Building Projects.**



**Building Partnerships.**

**Building Careers.**



**SACHSE**  
CONSTRUCTION.

*Proud Supporters of Michigan State University's  
Construction Management Program*



[www.sachseconstruction.com](http://www.sachseconstruction.com)



## 2022 GOLF OUTING RECAP

The 2022 MSU Construction Management Alumni golf outing took place on Tuesday, August 2, 2022. We welcomed 224 golfers, representing 40 industry companies to the Forest Akers Golf Course in East Lansing, Michigan. We had over 38 unique sponsors, and netted approximately \$42,000 for the Construction Management Program.

The winning team was **Milwaukee Tool**. Our Diamond Level sponsor was **Barton Malow**, Platinum sponsors by **Alberici Constructors** and **Sachse Construction**, and three Gold sponsors by **Accel Construction**, **Milwaukee Tool**, **Power Construction**. Save the Date for this year's outing, taking place on **Tuesday, August 1, 2023!**



## 2023 GOLF OUTING



**24<sup>TH</sup> Annual**  
**Construction Management**  
Alumni Golf Outing

FOREST AKERS WEST

TUESDAY, AUGUST 1, 2023

# REGISTER HERE!





# 2023 GOLF OUTING SPONSORS - THANK YOU!



VIRACON®  
GLASS IS EVERYTHING™



OLIVER / HATCHER  
CONSTRUCTION



Alberici



KELLY BUILDING & DEVELOPMENT COMPANY LLC



A photograph of two construction workers, a woman on the left and a man on the right, walking through a building under construction. They are both wearing white hard hats with the HITT logo, safety glasses, and high-visibility yellow and orange safety vests over blue polo shirts. The woman is holding a tablet, and the man is pointing towards the right. The background shows a complex network of metal beams, pipes, and construction equipment, with warm lighting from construction lights in the distance.

# HITT

## Trust, built.

Every day, our team members work together to elevate the business of building with our clients, partners, subcontractors, and teammates. Whether you're starting your career or are a seasoned construction professional, if you share our vision of creating exceptional building experiences – you belong here.

[HITT.COM/CAREERS](https://www.hitt.com/careers)

## 2022 CM TAILGATE RECAP/2023 SAVE THE DATE

On an overcast fall day in early October, CM Students, Alumni, Faculty, and Friends gathered for the 2022 CM Industry Advisory Board (IAB) Tailgate to cheer on the Spartans as they took a triumphant overtime victory over Wisconsin (34-28) for the annual homecoming football game. Each year, the IAB has put on a tailgate that coincides on or around homecoming or the CM career fair, 2022 was no different as we celebrated our 7th year. Over 75 alumni, friends, and supporters of the program joined us for the nail-biting victory. The event was organized by the IAB Curriculum & Outreach Committee and resulted in almost 425 sandwiches consumed, over 700 drinks, and all made possible by Board member companies. A special thanks goes out to **Alberici Constructors, RAM Construction Services, HITT Contracting, Power Construction, Motor City Electric, and Ed Wynal for their unwavering commitment to our CM Students in making the tailgate a success.**

Save the Date! The 2023 IAB Tailgate will take place on Saturday, September 23rd against Maryland. Location will be the same as 2022; Outside McLane Baseball Stadium near Sparty. Sponsorships are available! Contact [msucmboard@gmail.com](mailto:msucmboard@gmail.com) for more information.



# SAVE THE DATE

## CM ALUMNI TAILGATE



Location:  
**OLD COLLEGE FIELD**  
(Between Jenison Field House  
& McLane Baseball Stadium)

Food, Drinks, and 43" TV's!  
Company Sponsorships  
Available.



**11:30 AM // Kick-off at 3:30 PM**  
**SATURDAY, SEPTEMBER 23rd - HOMECOMING**

RSVP at [msucmtailgate2023.eventbrite.com](https://msucmtailgate2023.eventbrite.com)



BUILT FOR THE CHALLENGE



[alberici.com](http://alberici.com)



## Message from the Program Director

Dear Spartans,

As I come to the end of my tenure in my CM Program Director role after four and a half years of service, I am happy to share a snapshot of our program's status in key areas.

Working towards our mission, "to inspire and educate future leaders and engaged citizens who will innovate the built environment industry." together, we have made great strides in:

- Cohesive and Strong Program Identity,
- Enriched and Inclusive Student Experience,
- Exemplary Research and Interdisciplinary Efforts,
- Diversified Funding Models, and
- Impactful Outreach and Engagement.



Photo of Dr. Sinem Mollaoglu

Preceded by steady growth of admits at freshmen level over the last three years, our Program has transformed from 'Discovery' to 'Destination' status. We had over 200 students enrolled (graduate and undergraduate combined) in our program during this academic year. 54 students were admitted to the upper level and 39 seniors graduated. One graduate continued to advanced degree and all graduates were employed. \$82K in scholarships were awarded to 37 of our current students.

Our program also has enjoyed improved and diverse student engagement and leadership via student organizations, competition teams, and individual efforts spanning across the areas of professional development, hands-on experiences, research, and outreach.

Below are some of the recent highlights:

- Residential team attended National Association of Home Builders (NAHB) competition.
- Commercial team attended Associated Builders and Contractors (ABC) competition.
- Supported by MSU's Infrastructure, Planning, and Facilities Group and several industry sponsors, a team of students attended the Associated General Contractors' (AGC) Annual Convention.
- We held the second annual Speed Networking and Mentoring Mash Up event with our Industry and Alumni Board (IAB) members.
- Professional Women Builders (PWB) student organization successfully held the 2nd annual STEM career exploration events with Lansing Girls Scouts.

Significant grants (totaling about \$4M from external resources) were on-going and received during this year with strong scholarship and engagement locally, nationally, and internationally with professional and larger communities in intelligent technologies and energy efficiency, team science and education, integrative project delivery, sustainability, and mass timber.

Of note, we had significant changes to our core faculty: Dr. Armin Yeganeh joined our faculty as a tenure track Assistant Professor in Fall 2022. The Program ran a search for three new teaching specialists.

Our school/program successfully continued its Real Estate Graduate Certificate Program in its second year and launched its Career Fair Sponsorship Package for 2022 and almost doubled its income to the program in comparison to the last year.

Our Program's doctoral graduates continue our legacy of leadership in construction education. Dr. Faizan Shafique recently joined University of Missouri as a tenure track Assistant Professor; following an academic career path like his recently graduated Spartan peers: Dr. Mohsen Goodarzi (at Ball State University), Yunjeong "Leah" Mo (at Iowa State University), and Anthony Sparkling (Purdue University).



School of Planning, Design  
and Construction  
MICHIGAN STATE UNIVERSITY

As I move into my new role as the next CANR Faculty Excellence Advocate, I will stay engaged with our stakeholders as a part of the CM faculty and continue to serve our community. I am excited for this new chapter for our program to:

- Ensure successful transition considering key changes in the school and program administration, program’s expansion at the upper level, and on boarding of new teaching specialists.
- Provide opportunities to attract and retain minoritized students to our program.
- Work with our industry partners towards ‘Endowed Professor’ & ‘Professor of Practice’ positions to recruit and retain high quality faculty.

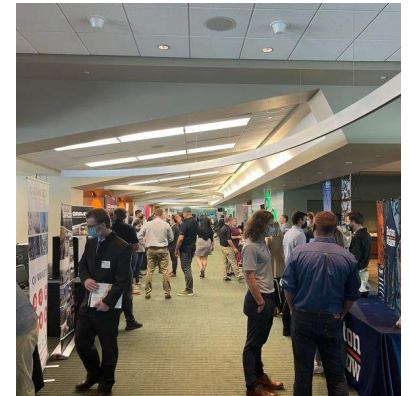
As always, please remember that you are our essential partners in working towards these goals. Please reach out and stay engaged. **GO GREEN!**

**Sinem Mollaoglu**, PhD, LEED AP, CGP, **Professor** and **Program Director** of Construction Management, School of Planning, Design, and Construction, **Michigan State University**

## 2022 CAREER FAIR RECAP

Nearly 65 companies were present at the 2022. MSU Construction Management Career Fair held at Spartan Stadium.

The career fair sees students beginning at all levels of the program for summer internships and full-time opportunities. The event is also open to other students in the School of Planning, Design and Construction, as well as the School of Engineering, most commonly Civil Engineering. Our graduates consistently have extremely positive placement rates, competitive salaries, and incredibly diverse positions.



Registration for the 2023 MSU **Construction Management Career Fair** is FULL! Thank you to all of our dedicated companies for registering early. Employers can sign up for the waitlist on Handshake directly. We will see you on **September 28th, 2023!**

CAREER FAIR SPONSORSHIP PACKAGES			
School of Planning, Design and Construction Construction Management MICHIGAN STATE UNIVERSITY		Tower Level \$3,500 3 Spots Available	Bridge Level \$2,500 7 Spots Available
BEFORE	Pre-Fair Presentation Night	- Presentation Slot - Refreshment Table Sponsorship - Event Program Sponsorship	- Presentation Slot - Event Program Listing
DURING	Career Fair	- Two (2) Tables in Premium Location - Event Signage	- One (1) Table in Preferential Location - Event Signage
	CM Social Media Takeover	- Full Day During Week of Career Fair	- Half Day During Week of Career Fair
	CM Resume Book	- Company Logo On Front Cover	- Company Logo on Back Cover
AFTER	Interview Day	- Included	- Included

“A la Carte” Sponsorship Options Offered Dependent on Availability  
for more information contact Bob Aydukovic at aydukov2@msu.edu

The sponsorship package to the left will be available on a first come, first serve basis.

For more information, contact  
**Bob Aydukovic**,  
aydukov2@msu.edu



# THE FUTURE IS GREEN AND WHITE

PROUD SUPPORTERS OF MSU'S CONSTRUCTION MANAGEMENT PROGRAM

**Barton  
Malow**



WWW.BARTONMALOW.COM

**35+**

**MSU ALUMNI**

ACROSS ALL BARTON MALOW + MSU PROJECT TEAMS

## CM Student Groups:

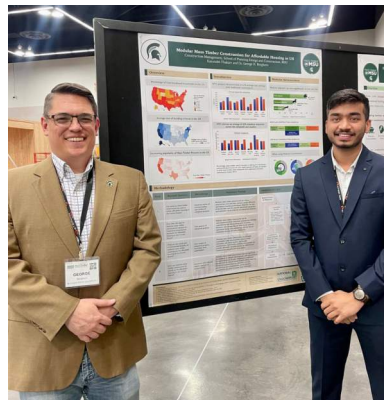
The four construction management student groups: Student Builders and Contractors Association (SBCA), the Professional Women Builders (PWB), Sigma Lambda Chi (SLC), and the Graduate Student Association in Construction (GSAC) were extremely busy during the 2022-2023 academic year, check out some of their activities below!

Each student group hosts events throughout the year, including social events, networking and professional events, and industry specific events. The MSU Construction Management Industry Advisory Board supports them financially throughout the year by proceeds from the annual golf outing.

## BUILT TO LEAD:



GSAC Tailgate



International Mass Timber Conference



CONEXPO-AGC Convention



Commencement



Dissertation Defense  
Meltem Duva



PWB x Girl Scouts  
Build Day

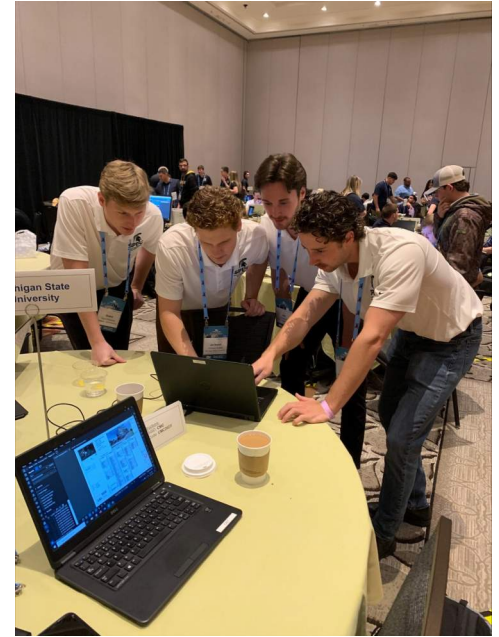


## Competitive Streak Continues.....

The CM Program expanded its participation with industry associations by fielding interdisciplinary competition teams for the National Association of Home Builders (NAHB) and Associated Builders and Contractors (ABC). In addition, the Program expanded its participation with the Associated General Contractors of Michigan (AGC-MI) by working with on-campus and industry partners to re-establish the AGC Student Chapter at MSU.

## ABC Construction Management Competition

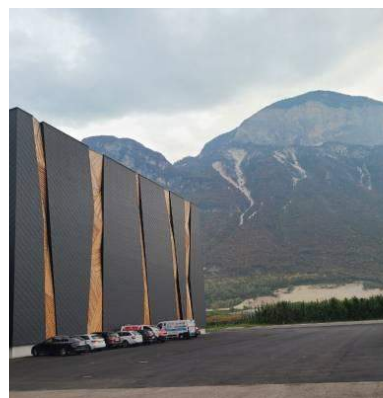
Mr. Robert Aydukovic guided a student team for the ABC Construction Management Competition which encompassed the development of a proposal, cost estimate, schedule, quality control plan, safety plan, and project management plan for a \$32 million academic building at private high school in Orlando, FL. The ABC Competition team started working in October 2022 and traveled to Kissimmee, FL, in March 2023 to go head-to-head with 20 other teams from across the country.



## Mass Timber Gets Massive Boost in 2022

Dr. George Berghorn leads as Research Director of MassTimber @MSU, a partnership between the School of Planning, Design, and Construction (SPDC) and the Department of Forestry. Recently, he traveled to Italy as part of a research assignment and planning for a mass timber and building decarbonization study abroad program he will lead on behalf of MSU in summer 2024.

Dr. Berghorn is a Principal Investigator on a broader research team who received funding from the prestigious National Science Foundation (NSF) to Prepare the Mass Timber Workforce of the Future, among other projects.



Mass Timber - Italy



Dr. Berghorn (center) in front of the White House during a NSF Conference

## AGC Convention

Dr. Sinem Mollaoglu took a team of CM Students to the AGC's annual convention in Las Vegas, NV, in March 2023 which developed from a new partnership between MSU's Infrastructure, Planning, and Facilities Group (MSU IPF) and several industry sponsors to give students the experience of the convention, networking, new technology exhibits, and hearing from industry leaders on trends and challenges.



**ACCELERATE YOUR PROJECT.**

📞 773.902.5296

🌐 [www.acceldevgroup.com](http://www.acceldevgroup.com)

📍 2211 N. Elston St., Suite 302 | Chicago, IL 60614





The Michigan State University Construction Management Industry Advisory Board expresses its recognition of and profound sadness regarding the events that transpired on campus on February 13th. We acknowledge the grand significance of Berkey Hall to numerous CM students, serving as a primary location for classes since the transition from Farrall Hall, and in close proximity to Human Ecology where SPDC is housed.

During this difficult time, we extend our sincerest condolences to the families and loved ones affected by the loss of Arielle Anderson, Alexandria Verner, and Brian Fraser.



Michigan State University Construction Management Program

# ALUMNI NEWSLETTER

Issue No. 2 | July 2023

---

## CONTACT US

---

### CM IAB

You can contact the Secretary of the CM IAB related to all contents of this newsletter, ways to get involved, or additional information by reaching out to:

[msucmboard@gmail.com](mailto:msucmboard@gmail.com)

### SPDC

You can contact the School of Planning, Design, and Construction directly related to the curriculum, research, or other program directed initiatives by reaching out to:

[spdc@msu.edu](mailto:spdc@msu.edu)

---